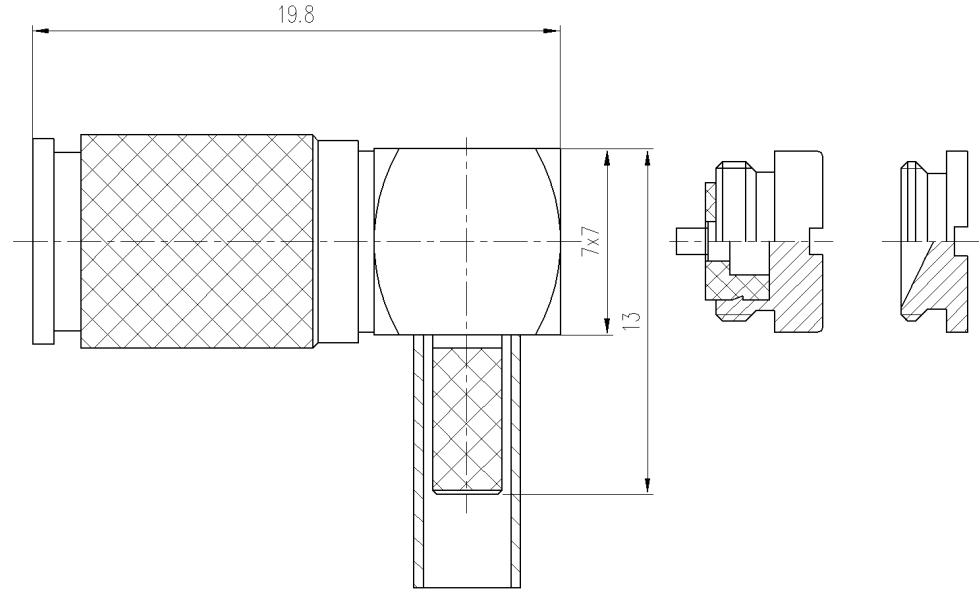


RevNo	Revision note	Date	Signature	Checked
V1.0	Sketch only			





材料与电镀
Materials&Electroplating

内导体 Conduct	黄铜镀金 Brass/ Gold Plating
介质 Insulator	聚四氟乙烯 PTFE
外壳 Body	黄铜镀镍 Brass / Nickel Plating
其他零件 Other Parts	黄铜镀镍 Brass / Nickel Plating

电气性能
Electric Performance

阻抗 Impedance	75 欧姆 75 OHMS
频率范围 Frequency Range	0-2GHz
驻波比 VSWR	≤1.25
额定电压 Rating Voltage	250V

Unless otherwise specified, tolerances as below: .x ±0.15 .xx ±0.1 .xxx ±0.05 Angle: ±2°	Material:	See Notes	Weight	-	 Lenor 乐福士	
	Finish:	See Notes	Scale	-		
	Unit	mm	Page	01		
	REV.	V1.0	DWG No	-		
Drawn	Date:	Projection			P/N 料号	80-7160-104-02
Checked	Date:	Title:		Cust P/N.		
Approved	Date:	品名		1.0/2.3 PLUG RIGHT ANGLE CRIMP FOR 2.6		